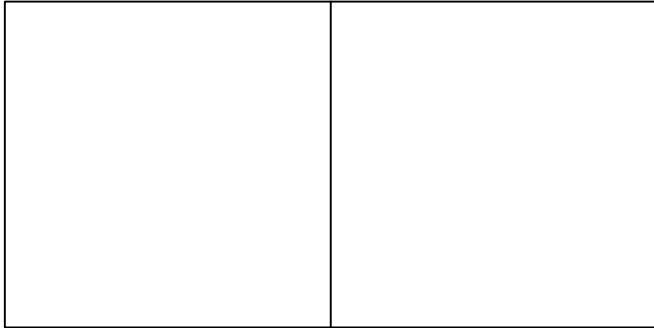


PARENTESI TABLE-ASSEMBLY INSTRUCTIONS

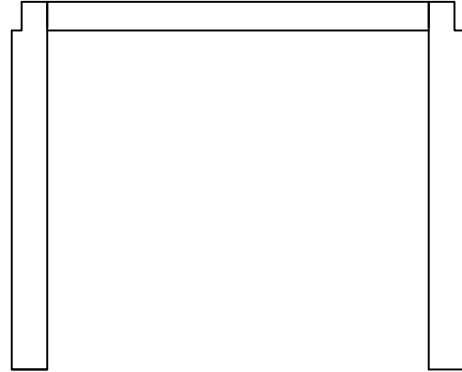


WWW.DWR.COM

(a) TABLE TOP



(b) TABLE LEG



COMPONENTS:

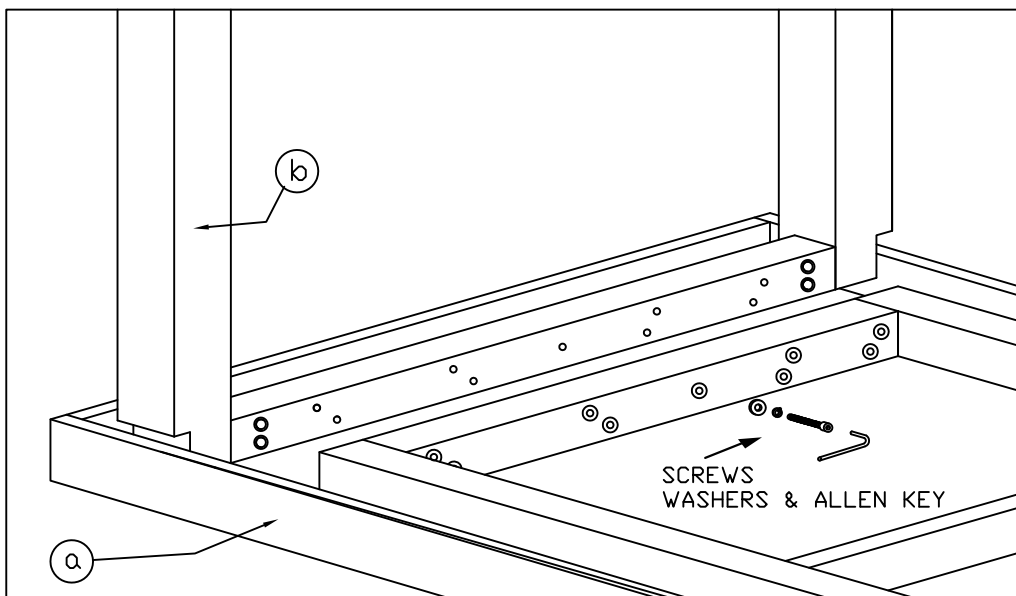
a	TABLE TOP	QTY 1
b	TABLE LEG	QTY 2

HARDWARE :

c	SCREWS	QTY 18
d	WASHER	QTY 18
e	SPRING WASHERS	QTY 18
f	ALLEN KEY	QTY 1

STEP 1 - TURN THE TABLE TOP (a) UPSIDE DOWN, LAY IT ON A SMOOTH SURFACE. PROTECTIVE SHEET OR BLANKET RECOMMENDED.

STEP 2 - ATTACH EACH OF THE LEG (b) TO EACH SIDE OF THE TABLE TOP (a) BY SCREWING A SCREW (c) WITH A WASHER (d) AND A SPRING WASHER (e) INTO EACH OF THE 9 PREDRILLED HOLES LOCATED AT THE SIDES OF THE TABLE TOP USING AN ALLEN KEY (f). PLEASE REFER TO IMAGE BELOW:

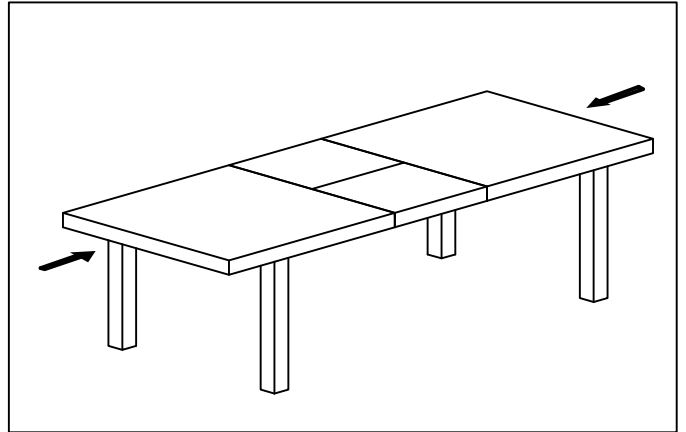
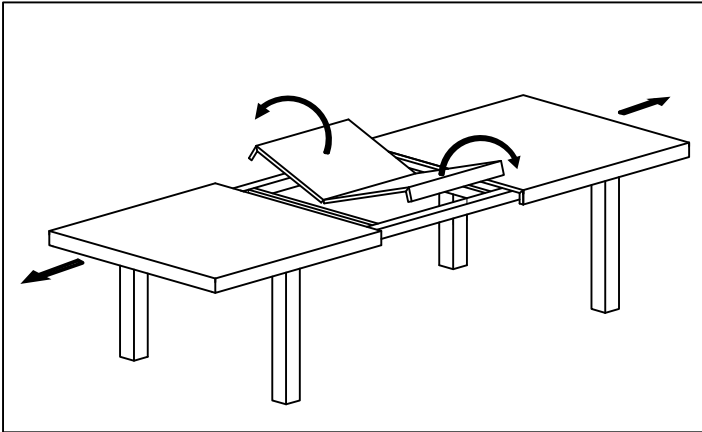
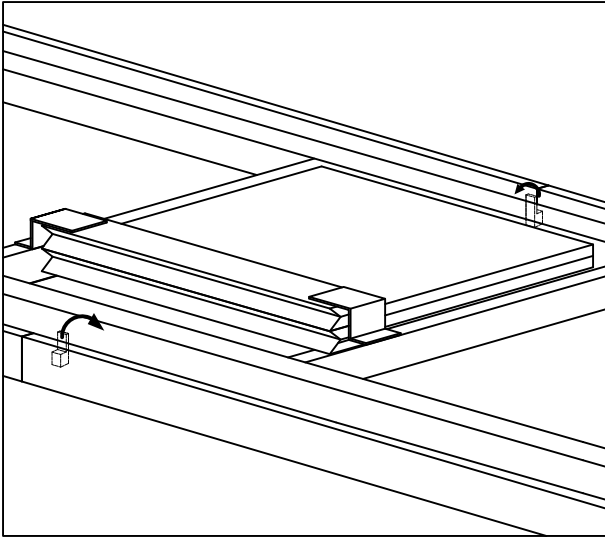


STEP 3 - AFTER THE PARENTESI TABLE IS ASSEMBLED, TURN THE TABLE IN ITS UPRIGHT POSITION FOR USE.

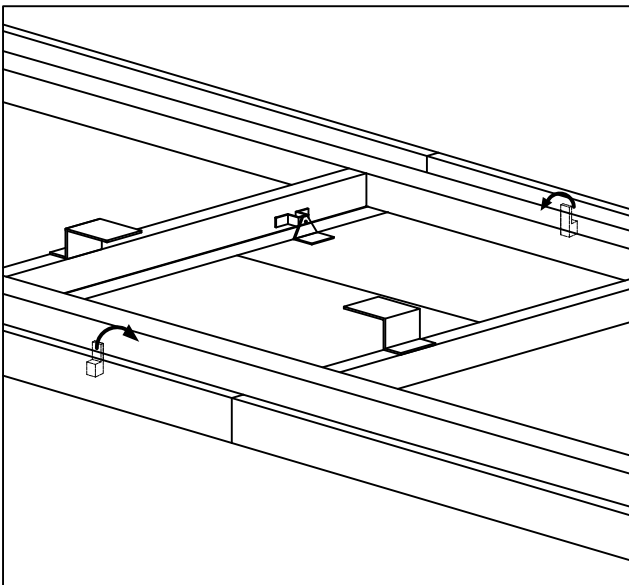
PARENTESI TABLE-ASSEMBLY INSTRUCTIONS



STEP 1 - TO EXTEND THE TABLE, UNLOCK THE EXTENSION LEAVES BY PUSHING UP THE LEVER AS SHOWN LOCATED ON THE UNDERSIDE OF THE TABLE TOP.



STEP 2 - RELOCK BY PUSHING DOWNWARDS THE LEVER TO SECURE THE EXTENSION LEAVES.



TO UNEXTEND TABLE, REVERSE STEPS.